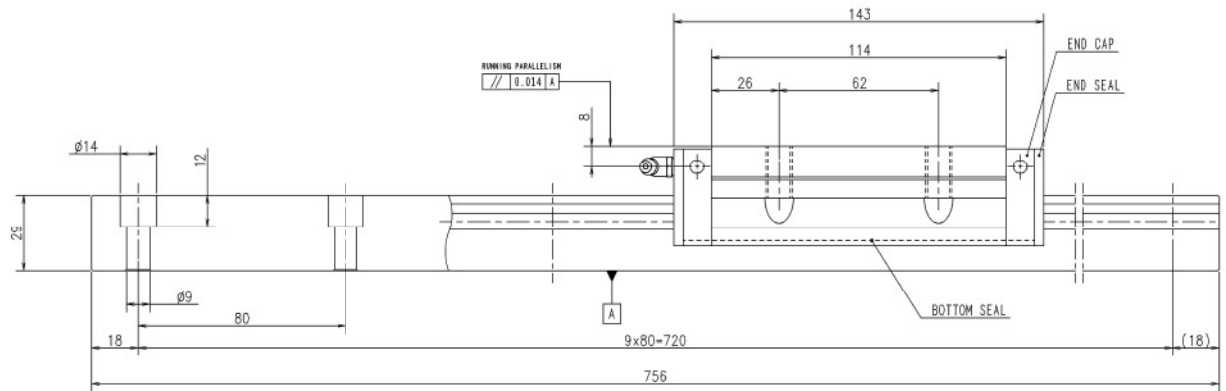
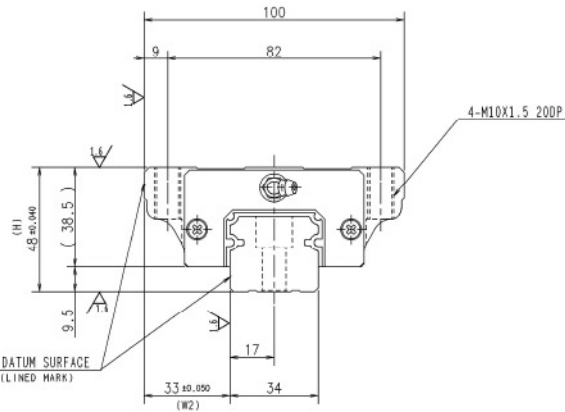
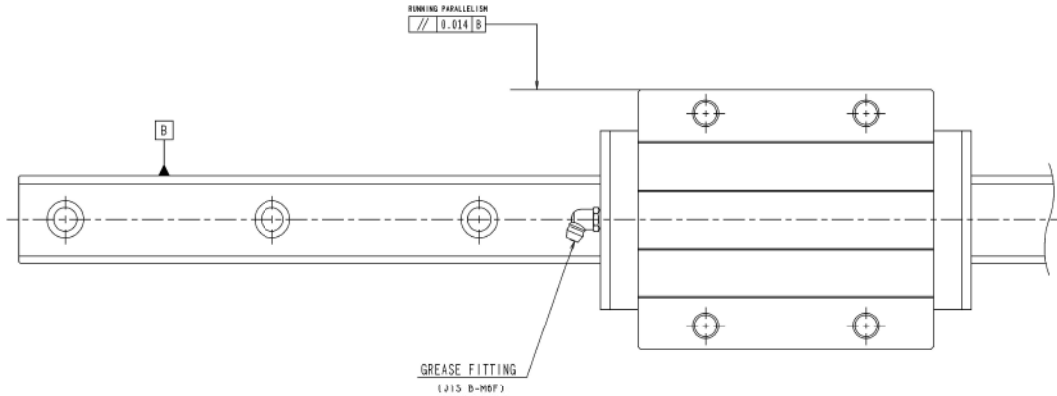
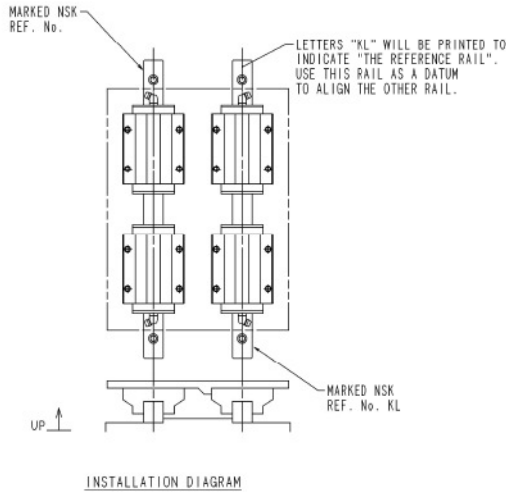


Note: this drawing illustrates the basic rail configuration and measurements for the NSK SH35 "combo" packages offered by Automation Overstock.

www.automation-overstock.com

What we have for sale are pre-assembled guideways consisting of TWO rails 756mm long and TWO flange bearings on each rail. These are supplied in a box of TWO guideway assemblies (two rails and four bearings). We do not have additional rail or bearings available in this size.



ASSEMBLY DATA		LINEAR GUIDE DATA				REV. NO.	DESCRIPTION OF CHANGES		DATE	BY
VARIATION OF MOUNTING HEIGHT (A PAIR OF RAILS, ALL SLIDES)	H: 48 0.015	MATERIAL		MODEL NO.	SH35GL	DEFAULT TOLERANCES		CUSTOMER	CUSTOMER'S DWG. NO.	
VARIATION OF LATERAL WIDTH (REFERENCE RAIL ONLY)	W2:33 0.020	END CAP	POM	ACCURACY GRADE	P5Z3	DIMENSION TOLE.		APPLICATION		
DYNAMIC FRICTION FORCE DATA		END SEAL	NBR+SUC	BALL DIAMETER	6.35	TO 6	±0.1	APR'VD	CHECKED	DRAWN
PRELOAD, [N]	2840	RECOMMENDED TORQUE OF BOLTS (CASE OF SCM)		BASIC DYNAMIC LOAD RATING, [N]	61500	OVER 6 TO 30	±0.2	DATE	SCALE	UNIT
TOLERANCE OF FRICTION FORCE, [N]	9.80~22.6	BOLT NO.	TIGHTENING TORQUE	BASIC STATIC LOAD RATING, [N]	117000	OVER 30 TO 120	±0.3	REF. NO.	FREE	MM
SEAL FRICTION FORCE, [N]	MAX 11.8	M2.5	0.58 Nm	M8	22 Nm	OVER 120 TO 400	±0.5	SH350756GLC2W01P63		DWG. NO.
MEASURING LUBRICATION	PRE PACKED GREASE	M3	1.06 Nm	M9	43 Nm	LUBRICANT	EXXON RDNEX NP	OVER 400 TO 1000		±0.8
MEASURING SPEED, [m/min]	1.0	M4	2.5 Nm	M10	76 Nm	HARDNESS OF BALL TRACK	HRC58~63	OVER 1000 TO 2000		±1.2
		M5	5.1 Nm	M11	122 Nm	NUMBER OF BALL SLIDES PER RAIL	2	OVER 2000 TO 4000		±2
		M6	8.6 Nm	M12	196 Nm	NUMBER OF BUTTING RAIL		OVER 4000 TO 8000		±3